

# Northwestern

MARY AND LEIGH

## BLOCK MUSEUM OF ART



### Press Images

Contact: Lindsay Bosch, Communications & Marketing Manager with questions or additional inquiries ([Lindsay.bosch@northwestern.edu](mailto:Lindsay.bosch@northwestern.edu))

### Paint the Eyes Softer: Mummy Portraits from Roman Egypt

*January 13 - April 15, 2018*

#### 2018 Exhibition Images & Captions

	<p>1. Mummy portrait painter's instruction panel, wood, 24.3x35.2 cm., from Tebtunis, Fayum. Courtesy of the Phoebe A. Hearst Museum of Anthropology and the Regents of the University of California. (6-21378)</p>
	<p>2. Mummy portrait (of a woman), wood, 31.7x23 cm., from Tebtunis, Fayum. Courtesy of the Phoebe A. Hearst Museum of Anthropology and the Regents of the University of California. (6-21376)</p>



3. Mummy portrait (of a man with a wreath), wood, from Tebtunis, Fayum. Courtesy of the Phoebe A. Hearst Museum of Anthropology and the Regents of the University of California. (6-2378b)



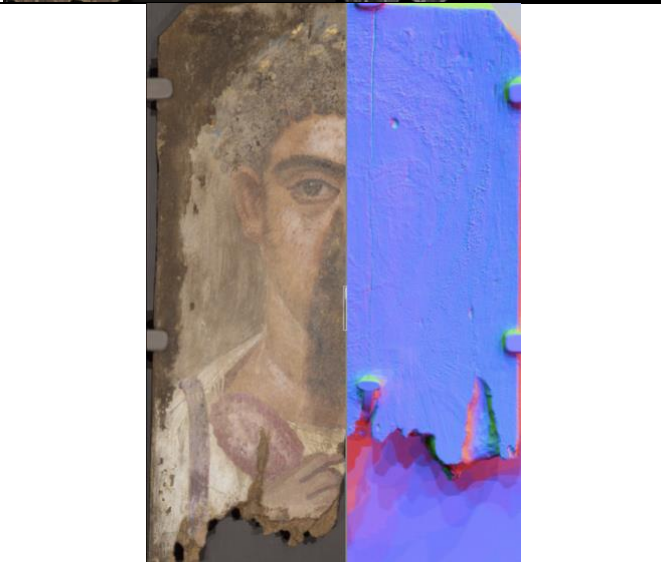
4. Mummy portrait (of an older man), wood, from Tebtunis, Fayum. Courtesy of the Phoebe A. Hearst Museum of Anthropology and the Regents of the University of California. (6-21380)



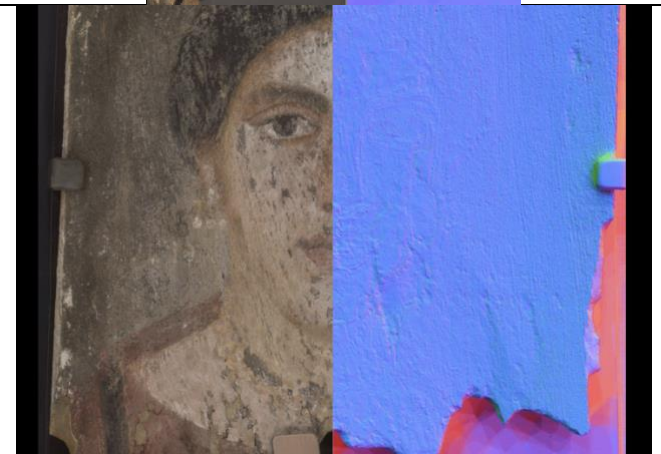
5. VIS-NIR-Fluorescence comparison of Mummy portrait. Courtesy of the Phoebe A. Hearst Museum of Anthropology and the Regents of the University of California and NU-ACCESS. (6-2378b)



6. VIS-NIR-Fluorescence comparison of Mummy portrait. Courtesy of the Phoebe A. Hearst Museum of Anthropology and the Regents of the University of California and NU-ACCESS. (6-21376)



7. Photometric stereo surface shape visualization of Mummy portrait. Courtesy of the Phoebe A. Hearst Museum of Anthropology and the Regents of the University of California and NU-ACCESS. (6-2378b)



8. Photometric stereo surface shape visualization of Mummy portrait. Courtesy of the Phoebe A. Hearst Museum of Anthropology and the Regents of the University of California and NU-ACCESS. (6-21376)